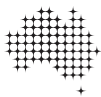


# RESHAPING AUSTRALIA COMMUNITIES IN ACTION



Australian  
Academy of Health and  
Medical Sciences



The Royal Society of New South Wales  
and Learned Academies Forum

**03 November 2022**

Government House, Sydney

Free of charge. Live-streamed.

# RESHAPING AUSTRALIA COMMUNITIES IN ACTION

Scan to register



royalsoc.org.au



Free of charge. Live-streamed.

## 03 November 2022

Government House, Sydney

**The tumultuous last decade has witnessed a decline in political consensus and a growing perception that our formal institutions of government have failed to tackle fundamental challenges in areas such as climate change and social inequality.**

As the 2022 Federal election demonstrated, many Australian communities, corporations and interest groups have become increasingly active as voices for political change.

The 'Uluru Statement from the Heart' is one striking example of a community demanding that they be shapers of policy, not just the recipients of what others think should be done.

Such activism builds on a long tradition of community participation in Australia, which has developed a vibrant and extensive not-for-profit sector. There are now more than 50,000 organisations, one million

employees and five million volunteers, providing services and support in many areas of our civil life.

These community and volunteer efforts are essential in managing the immediate and long-term impacts of social and environmental crises including catastrophic fires, droughts, and floods. Successful initiatives have involved local communities collaborating with corporations, businesses, research, and government agencies to find innovative solutions.

This year, the Royal Society of New South Wales in partnership with Australia's Learned Academies and under the gracious patronage of Her Excellency the Honourable Margaret

Beazley AC KC, Governor of New South Wales, will explore this dynamic of communities in action. It will canvass some of the latest research on the factors shaping disparities in social, economic and well-being outcomes for Australians and address four key areas - health, education, infrastructure, and the environment.

The Forum will highlight examples of community collaboration with business, non-for-profit, research, and government organisations to drive meaningful change. It will conclude with a consideration of how greater community participation might impact long-term policy development for the benefit of all Australians.



Australian Academy of Health and Medical Sciences



Australian Academy of the Humanities



Australian Academy of Technological Sciences & Engineering



The Royal Society of New South Wales acknowledges the generous support by Her Excellency the Honourable Margaret Beazley AC KC, Governor of New South Wales, and the Office of the New South Wales Government Chief Scientist and Engineer.

# THURSDAY 03 NOVEMBER 2022 9.00am-6.00pm

Scan to register



royalsoc.org.au



TIME	SUBJECT	SPEAKERS
09:00-09:30	<b>REGISTRATION &amp; GUESTS SEATED</b>	
09:30-09:45	<b>Official Opening</b>	<b>Her Excellency the Honourable Margaret Beazley AC KC</b> Governor of New South Wales
	<b>Welcome and Acknowledgements</b>	<b>Susan Pond AM FRSN FTSE FAHMS</b> President, Royal Society of New South Wales
	<b>Ministerial address</b>	<b>The Honourable Andrew Leigh MP FASSA</b> Assistant Minister for Competition, Charities and Treasury; Federal Member for Fenner in the ACT
	<b>Introduction to Program and Moderator</b>	<b>Stephen Garton AM FRSN FAHA FASSA</b> Chair, Forum Program Committee, Principal Advisor, Office of the Vice-Chancellor and President, The University of Sydney
	<b>Moderator and Rapporteur</b>	<b>Julianne Schultz AM FAHA</b> Emeritus Professor, Media and Culture, Griffith University; Chair, The Conversation Media Group

## SESSION I SETTING THE SCENE

09:45-11:15	Despite a national myth of egalitarianism, contemporary social commentary, and research point to a growing divide between the 'haves' and 'have nots' in Australian society. This session will examine some of the broad economic and demographic patterns across Australia and explore in particular some of the indices of Indigenous disadvantage. It will set the scene for considering how communities are working to address social disenfranchisement and overcome health, economic and environmental challenges.	<b>Richard Holden FASSA</b> Professor of Economics, UNSW Business School; President, Academy of the Social Sciences Australia
		<b>Alison Frame</b> Deputy Secretary, Social Policy Group, Department of the Prime Minister and Cabinet, Australian Government
		<b>Kalinda Griffiths</b> Scientia Lecturer, Centre for Big Data Research in Health, University of New South Wales; Research and Education Lead for Aboriginal and Torres Strait Islander Health – Victorian Comprehensive Cancer Centre
		<b>James O'Donnell</b> Lecturer, School of Demography and ANU Social Cohesion Grand Challenge, College of Arts and Social Sciences, Australian National University

## SESSION II HEALTH AND COMMUNITIES

11:15-12:30	Although Australia has one of the best and most equitable health systems in the world, there are distinct challenges and inequities which need to be recognised and addressed. This session will consider these issues in urban, regional, and remote, and culturally diverse settings, and in the under-resourced sectors of mental and Indigenous health and show how community initiatives can help provide innovative solutions.	<b>Bernie Shakeshaft</b> Founder and Director BackTrack Youth Works
		<b>Sally Redman AO</b> CEO Sax Institute Sydney
		<b>Elizabeth Elliott AM FRSN FAHMS</b> Distinguished Professor of Paediatrics and Child Health, University of Sydney
		<b>Maree Teesson AC FAHMS FASSA</b> Professor and Director of The Matilda Centre for Research in Mental Health and Substance Use; NHMRC Leadership Fellow, University of Sydney
12:30-13:30	<b>LUNCH ON VERANDAH</b>	

# THURSDAY 03 NOVEMBER 2022 9.00am-6.00pm

Scan to register



royalsoc.org.au



**TIME SUBJECT SPEAKERS**

## SESSION III NATURAL AND BUILT ENVIRONMENT

13:30– 14:45	Our natural and built environments are increasingly threatened by issues including climate change and the accumulation of waste. Local communities, businesses, researchers, and coalitions of activists have been working creatively on climate mitigation interventions, technological solutions for net zero emissions, and waste management and recycling. This session will look at how governments, communities and other stakeholders are coming together to create more harmonious and resilient futures for our natural and built environments.	<b>Louise Adams FTSE</b> Chief Operating Officer, Aurecon
		<b>David Schlosberg FASSA</b> Professor of Environmental Politics and Director, Sydney Environment Institute, University of Sydney
		<b>Tone Wheeler</b> Principal and Director, Environa Studio
		<b>Angelica Kross</b> Community Activist

## SESSION IV EDUCATION

14:45– 16:00	Research continues to underline the transformative potential of education that is accessible to all – regardless of disability, race, language, religion, gender, and income – to enrich technological innovation, economic growth, political stability, and social cohesion. This session will take stock of Australia’s investment in education and offer examples and strategies for an education-led path to a more equal, more inclusive, and more successful Australia.	<b>Peter Shergold AC FRSN FASSA</b> Chancellor, Western Sydney University
		<b>Pasi Sahlberg</b> Professor of Education, Southern Cross University
		<b>Kim Beswick</b> Director, Gonski Institute for Education; Head, School of Education, Professor of Mathematics Education; University of New South Wales; Member, Australian Academy of Science’s National Committee on Mathematical Sciences
		<b>Lisa Jackson Pulver AM FRSN</b> Professor of Public Health, Deputy Deputy Vice Chancellor Indigenous Strategy and Services, University of Sydney

## SESSION V SUMMARY AND SOLUTIONS

16:00– 17:00	<b>Ariadne Vromen FASSA</b> Sir John Bunting Chair of Public Administration, Crawford School of Public Policy, Australian National University
	<b>Lisa Jackson Pulver AM FRSN</b> Professor of Public Health, Deputy Deputy Vice Chancellor, Indigenous Strategy and Services, University of Sydney
	<b>Julianne Schultz AM FAHA</b> Emeritus Professor, Media and Culture, Griffith University; Chair, The Conversation Media Group
17:00– 17:05	<b>CLOSING REMARKS</b>  <b>Susan Pond AM FRSN FTSE FAHMS</b> President, Royal Society of New South Wales
17:05– 18:00	<b>REFRESHMENTS SERVED ON VERANDAH</b>

# RESHAPING AUSTRALIA COMMUNITIES IN ACTION

## SPEAKERS

THURSDAY | 03 NOVEMBER 2022 | 9.00am-6.00pm

### OFFICIAL OPENING

**Her Excellency the Honourable Margaret Beazley AC KC**  
Governor of New South Wales



Her Excellency the Honourable Margaret Beazley AC KC is the 39th Governor of New South Wales, commencing her

five-year tenure on 2 May 2019. Prior to her appointment, Her Excellency enjoyed a long and distinguished law career spanning 43 years, during which time she served as a role model for women in law at both the State and National level. Appointed Queen's Counsel in 1989, in 1993 she was made a judge of the Federal Court of Australia, the first woman to sit exclusively in that Court. In 1996, she achieved the distinction of being the first woman appointed to the New South Wales Court of Appeal and, subsequently, the first woman to be appointed as its President. She was made a Companion of the Order of Australia in the Australia Day Honours List on 26 January 2020 for "eminent service to the people of New South Wales, particularly through leadership roles in the judiciary, and as a mentor of young women lawyers".

### WELCOME AND ACKNOWLEDGEMENTS

**Susan Pond AM FRSN FTSE FAHMS**

**President, Royal Society of New South Wales; Chair Forum Planning Committee**



Susan Pond is a distinguished physician, scientist, and company director with deep expertise in biotechnology. She has

a strong track record of creating impact by combining disciplines and working at the intersections between them. Susan is non-executive director of two ASX listed biotechnology companies, the Trusted Autonomous Systems for Defence CRC, Phenomics Australia, Sydney Quantum Academy, and a member of the Queensland University of Technology Council. Most recently, Susan was Chair of the NSW Smart Sensing Network and Director of Sydney Nano, a multidisciplinary initiative at The University of Sydney. She is Adjunct Professor in the Faculty of Engineering at The University of Sydney. Susan was elected President of the Royal Society of New South Wales in 2021.

**The Honourable Andrew Leigh MP FASSA**

**Assistant Minister for Competition, Charities and Treasury; Federal Member for Fenner in the ACT**



Andrew Leigh is the Assistant Minister for Competition, Charities and Treasury, and Federal Member for Fenner in the ACT.

Before being elected in 2010, Andrew was Professor of Economics at the Australian National University. He holds a PhD in Public Policy from Harvard, having graduated from the University of Sydney with first class honours in Arts and Law. In 2011, Andrew received the Economic Society of Australia's Young Economist Award and was elected Fellow of the Australian Academy of Social Sciences. His books include *Disconnected* (2010), *Battlers and Billionaires: The Story of Inequality in Australia* (2013), *Randomistas: How Radical Researchers Changed Our World* (2018), *Innovation + Equality: How to Create a Future That Is More Star Trek Than Terminator* (with Joshua Gans) (2019), *Reconnected: A Community Builder's Handbook* (with Nick Terrell) (2020), *What's the Worst That Could Happen? Existential Risk and Extreme Politics* (2021) and *Fair Game: Lessons from Sport for a Fairer Society & a Stronger Economy* (2022).

## INTRODUCTION TO PROGRAM AND MODERATOR

### **Stephen Garton AM FRSN FAHA FASSA**

**Chair, Forum Program Committee;  
Principal Advisor, Office of the  
Vice-Chancellor and President, The  
University of Sydney**



Stephen Garton is a Professor of History and former Provost and former Senior Deputy Vice-Chancellor at the University of Sydney.

He is a Fellow of the Royal Society of New South Wales, the Australian Academy of Humanities, the Academy of Social Sciences in Australia, and the Royal Australian Historical Society. He has written widely on the history of mental illness, social policy, veterans of 20thc wars, masculinity, sexuality, eugenics, and higher education in Australia and has been part of a team writing the history of Harlem in New York between the wars.

## MODERATOR AND RAPPORTEUR

### **Julianne Schultz AM FAHA Emeritus Professor, Media and Culture, Griffith University; Chair, The Conversation Media Group.**

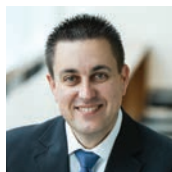


Julianne Schultz is the Chair of The Conversation. She was the publisher and founding editor of Griffith Review and is

Professor Emeritus of Media and Culture at Griffith Centre for Social and Cultural Research. She is an acclaimed author of *Reviving the Fourth Estate* (Cambridge) and *Steel City Blues* (Penguin), and the librettos to the award-winning operas *Black River* and *Going Into Shadows*. Julianne became a Member of the Order of Australia for services to journalism and the community, and an honorary fellow of the Australian Academy of Humanities the following year. She has served on the board of directors of the ABC, Grattan Institute and Copyright Agency, and chaired the Australian Film TV and Radio School, Queensland Design Council and National Cultural Policy Reference Group.

## SESSION I SETTING THE SCENE

### **Richard Holden FES FASSA Professor of Economics at UNSW Business School; President, Academy of the Social Sciences in Australia**



Richard Holden is Professor of Economics at UNSW Business School, and President of the Academy of the Social Sciences in

Australia. He received a PhD from Harvard University and was a faculty member at MIT and the University of Chicago before returning to Australia. He has published in leading economics journals such as the *Quarterly Journal of Economics*, *American Economic Review*, *Journal of Political Economy*, and *Review of Economic Studies*. His popular writings have appeared in outlets such as the *New York Times*, *Australian Financial Review*, *The Australian* and *The Sydney Morning Herald*. He is currently a regular columnist for the *Australian Financial Review*, is a fellow of the *Econometric Society*, and of the *Academy of Social Sciences in Australia*. Professor Holden's most recent book (co-authored with Rosalind Dixon) is *From Free to Fair Markets: Liberalism after COVID-19*.

### **Alison Frame Deputy Secretary, Social Policy Group, Australian Government Department of the Prime Minister and Cabinet**

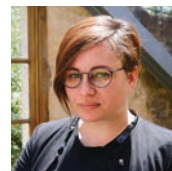


Alison Frame commenced as Deputy Secretary Social Policy in the Department of the Prime Minister and Cabinet in August

2020. She has led social policy initiatives and reform across the Commonwealth and NSW governments for over 14 years. As NSW Government Group Deputy Secretary, Property and Housing, Alison was responsible for 9 housing and property agencies, including Crown Lands, Property NSW and Land and Housing Corporation. In other senior leadership roles – including as deputy secretary in the Department of Planning and Environment and Department of Premier and Cabinet – Alison led reforms on child protection, domestic violence, Indigenous policy, disability policy, and governance. In the APS,

Alison held several social policy roles, including First Assistant Secretary, Policy and Strategy, Department of Human Services. Alison holds a Bachelor of Speech-Language Pathology and Bachelor of Political Science from the University of Queensland and a Master of Public Administration from the London School of Economics and Political Science.

### **Kalinda Griffiths Scientia Lecturer, Centre for Big Data Research in Health, University of New South Wales; Research and Education Lead for Aboriginal and Torres Strait Islander Health – Victorian Comprehensive Cancer Centre**



Kalinda Griffiths is a Yawuru woman of Broome, born and living in Darwin, Australia. She is an early career Scientia

Lecturer at the Centre for Big Data Research in Health at UNSW. An epidemiologist, Kalinda's interest is in empirically addressing complex health disparities in populations through existing data. Her research addresses the quality and governance of Aboriginal and Torres Strait Islander data with innovative research that focuses on equity, measurement of health disparities, improving health services and outcomes as well as building health research capabilities in regional and remote Australia. She has received several awards and has a range of national and international memberships, providing expert opinion to organisations and governments. She holds honorary fellowships at the University of Melbourne and Menzies School of Health Research, is Research and Education Lead Aboriginal and Torres Strait Islander Health at the Victorian Comprehensive Cancer Centre and is also Deputy Editor of the *Health Promotion Journal of Australia*.

### **James O'Donnell Lecturer, School of Demography and ANU Social Cohesion Grand Challenge, College of Arts and Social Sciences, Australian National University**



James O'Donnell is a Lecturer and Demographer at the Australian National University. He is a member of the ANU Social Cohesion Grand Challenge – a group of researchers from across the

University, including psychologists, political scientists, historians, business and management researchers and legal scholars who are investigating and implementing strategies to strengthen social cohesion in local communities across Australia. James' role is in measuring and mapping social cohesion and uncovering the key driving forces and consequences of neighbourhood and community cohesion. He has recently become the lead researcher on the Scanlon Foundation's Mapping Social Cohesion Study, a long running survey of Australians' attitudes to immigration, multiculturalism, and cohesion. James also has a research speciality in measuring the extent and impacts of homelessness and housing deprivation in Australia, a subject he has published widely on, including as part of his PhD is Demography from the ANU.

## SESSION II HEALTH AND COMMUNITIES

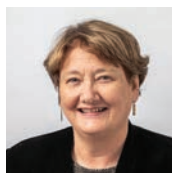
**Bernie Shakeshaft**  
Founder and Director, BackTrack  
Youth Works



Bernie Shakeshaft founded BackTrack in 2006, with a shed, a passionate crew of volunteers and a mission to keep kids

alive, out of jail and chasing their hopes and dreams. Sixteen years later, the organization has gained national recognition for how it engages, educates, trains, and employs vulnerable young people. BackTrack offers young people the holistic, flexible, and long-term support they need to get their lives back on track, through educational, training, and diversionary activities, transitional employment, residential accommodation, and youth work. Bernie has been named Australian of the Year Local Hero (2020) and National Rural Health Alliance Unsung Hero (2019), and has received the Spera Australian Rural Education Award, the Australian Crime and Violence Prevention Award, the Churchill Fellowship, and an Honorary Doctorate from the University of New England (2020). He and BackTrack are the subject of the award-winning documentary 'Backtrack Boys' and biography 'Back on Track'.

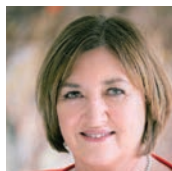
**Sally Redman AO**  
Chief Executive Officer, Sax Institute  
Sydney



Sally Redman is the inaugural CEO of the Sax Institute which drives the use of evidence in policy, programs, and

services. She has an international reputation for her work in increasing the impact of research on policy and practice, at the Sax Institute and in her previous role as the inaugural Director of the National Breast Cancer Centre. She is a behavioural scientist with an extensive record of research achievement, including over 230 publications in peer review journals. In 2013, she was appointed an Officer in the Order of Australia for her distinguished service to public health and the promotion of relationships between researchers, policy makers and practitioners. She received the President's Award from the National Heart Foundation in 2017.

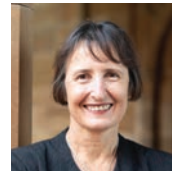
**Elizabeth Elliott AM FRSN FAHMS**  
Distinguished Professor of Paediatrics  
and Child Health, University of  
Sydney and Consultant Paediatrician,  
Children's Hospital Westmead



Elizabeth Elliott's career is dedicated to improving health and quality of life for children through education, research,

clinical care, and advocacy. Her focus is on children living in disadvantage – with rare diseases, disability, and fetal alcohol spectrum disorder, in Indigenous communities and in South-East Asia. Elizabeth established the Australian Paediatric Surveillance Unit to study rare diseases and the Paediatric Active Enhanced Disease Surveillance system for inpatient infectious disease surveillance, the latter proving invaluable in monitoring influenza and Covid pandemics. She consults to the WHO and Australian Human Rights Commission, Chairs the Australian Government's FASD Advisory Group, and is Senior Advisor in Child Health to UNICEF Australia. Elizabeth is a Fellow of the Academy of Health and Medical Sciences, and Fellow and recipient of the James Cook Medal from the Royal Society of New South Wales.

**Maree Teesson AC FAHMS FASSA**  
Professor and Director of The  
Matilda Centre for Research in Mental  
Health and Substance Use; NHMRC  
Leadership Fellow, University of Sydney



Maree Teesson is Director of The Matilda Centre for Research in Mental Health and Substance Use, NHMRC Leadership

Fellow, University of Sydney. She is a Former Australian National Mental Health Commissioner, current Chair of Australia's Mental Health Think Tank and the MRFF Million Minds Mission. Her novel digital and face to face clinical trials and large long term cohort studies currently have over 24,000 individuals enrolled across Australia. She has >310 publications & over 19,000 citations. Her innovative research has been recognised through leadership of over 100 grants (>\$71M). She has been awarded the most prestigious prizes & awards in her field; Australian Museum Eureka Prize for Mentoring Young Researchers; the Westpac/AFR 100 Women of Influence and the Society for Mental Health Research Oration and Founders Medal. Implementation of her digital programs, reach over 30,000 Australian users annually with more than four million views around the world.

## SESSION III NATURAL & BUILT ENVIRONMENT

**Louise Adams FTSE**  
Chief Operating Officer, Aurecon



Louise Adams is a Chartered Civil Engineer and Aurecon's Chief Operating Officer. She has over 20 years' experience managing

and designing works in both civil and multi-disciplinary. With a background in stormwater management, flood risk assessment and mitigation, Louise is responsible for driving the financial, operational and people performance across all areas of the business to achieve the Group's strategic business goals. Prior to her current role, Louise was the Chief Executive for Aurecon Australia and New Zealand, overseeing a workforce of approximately 4300 people involved in the delivery of infrastructure solutions for a wide variety

of sectors. Louise has also undertaken work in the public and private sectors as well as part of emergency relief efforts. In November 2020, Louise was named the Australian CEO of the Year, which is part of The CEO Magazine's Executive of the Year awards.

**David Schlosberg FASSA**  
**Professor of Environmental Politics and Director, Sydney Environment Institute, University of Sydney**



David Schlosberg is known internationally for his academic contributions in environmental politics, environmental movements, and political theory - in particular the intersection of the three with his work on environmental and climate justice. His other academic interests are in ecological justice and democracy, climate adaptation and resilience, and sustainable systems supporting everyday needs. Professor Schlosberg's more applied work - funded by and with partners in local, state, and federal government - includes climate adaptation and resilience planning, public experiences of shock climate events, community-based food systems, and community responses to climate-induced disasters.

**Tone Wheeler**  
**Principal and Director Enviro Studio**



Tone Wheeler is an architect, academic and author who designs to the triple bottom line: social, environmental, and financial considerations. His focus is on sustainability and affordability in multi-dwelling and community projects. He has won the AIA 'Milo Dunphy Sustainability Award', the AIA 'Leadership in Sustainability Prize' and the 'Sustainability Awards Lifetime Achievement'. Tone has been academic at four universities, currently Adjunct Professor at UNSW, and is the President of the Australian Architecture Association. He is frequently in the media as a writer for Architecture & Design magazine, and commentator on ABC radio and TV. He has built 5 all-electric cars.

**Angelica Kross**  
**Community Activist**



Angelica Kross is an activist from Western Sydney, based in Parramatta. Angelica has been involved on local campaigns for more than 7 years, including the urgency of the climate crisis that continues to dominate the minds and work of Western Sydney activists. The lack of resources to alleviate the worst effects of climate change, an absence of green town planning, higher average temperatures, and deficient transport infrastructure contribute to this urgency. She has worked on a number of campaigns including advocating for the end of gas and coal extraction in Australia. Angelica is passionate about supporting different communities with their responses to climate, including a just transition towards secure and unionised green jobs.

**SESSION IV**  
**EDUCATION**

**Peter Shergold AC FRSN FASSA**  
**Chancellor, Western Sydney University**



Peter Shergold spent 16 years as an academic economic historian at UNSW before moving into the Australian Public Service. During the next two decades Peter became the Secretary of the Department of Education, Science and Training, before serving for 5 years as the Secretary of the Department of the Prime Minister and Cabinet. Since leaving that position in 2007 he has chaired the National Centre for Vocational Education Research and the Higher Education Standards Panel. He now chairs the James Martin Institute and the NSW Education Standards Authority. In recent years, he has presented two major Government reports: Looking to the Future (2020) and, with David Gonski, In the Same Sentence (2021). Both have proved influential. In addition, Peter chairs a range of Boards in the private, public, and not-for-profit sectors.

**Pasi Sahlberg**  
**Professor of Education, Southern Cross University**



Pasi Sahlberg is Finnish educator, author, and global thought-leader who has advised education policymakers and governments around the world. He has worked as senior education expert at the World Bank, European Commission, and as visiting professor at Harvard University. He is recipient of several international education awards, including 2012 Education Award in Finland, 2013 Grawemeyer Award in the U.S., 2016 Lego Prize in Denmark, and 2021 Dr Paul Brock memorial Medal in Australia. His recent books include Let the Children Play: Why more play will save our schools and help children thrive (with William Doyle, 2019), In Teachers We Trust: The Finnish way to world-class schools (with Tim Walker, 2021) and Finnish Lessons 3.0: What can the world learn from educational change in Finland (2021). He is Visiting Professor at UNSW Business School in Sydney, and Adjunct Professor at the University of Helsinki.

**Kim Beswick**  
**Director of the Gonski Institute for Education, Head of the School of Education, Professor of Mathematics Education; University of New South Wales; Member, Australian Academy of Science's National Committee on Mathematical Sciences**



Professor Kim Beswick is passionate about providing equitable access to quality education that empowers all students. Her work is closely connected with practice in schools and classrooms through research partnerships that include every state Department of Education, most Catholic dioceses, and several TAFE institutions, associations, and STEM societies. She is particularly interested in the relationship between teachers' beliefs and knowledge and their expectations of and aspirations for their students, especially within mathematics education, and how professional learning can provide a catalyst for change. Professor Beswick is a Member of the Australian Academy



of Science's National Committee on Mathematical Science, the Australian Representative, International Commission on Mathematical Instruction, Convenor, 15th quadrennial International Congress on Mathematics Education and Life Member the Australian Association of Mathematics Teachers. She has published more than 120 peer-reviewed publications.

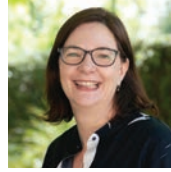
**Lisa Jackson Pulver AM FRSN**  
**Professor of Public Health, Deputy Deputy Vice Chancellor Indigenous Strategy and Services, University of Sydney**



Lisa Jackson Pulver AM is an academic leader, a recognised expert in public health, prominent researcher, a visionary and tireless

advocate for education and health using innovative methods to ensure that both are inclusive for all. Lisa is a Director and Council member of The Australian Medical Council and is a ministerial appointee to the Australian Statistical Advisory Council. She was awarded a Queens Birthday honour in 2011 for her service to medical education. A visionary educator, Lisa places the needs of Aboriginal and Torres Strait Islander peoples and community at the heart of all that she achieves. She serves her country in the Royal Australian Air Force Specialist Reserve (GPCAPT). Her artworks adorn the reports she writes.

**Ariadne Vromen FASSA**  
**Sir John Bunting Chair of Public Administration, Crawford School of Public Policy, Australian National University**



Ariadne Vromen joined ANU in mid-2020 as the new Sir John Bunting Chair of Public Administration in the Crawford School of

Public Policy. As Deputy Dean (Research) for the Australia and New Zealand School of Government she focuses on research strategy for impactful and applied research. Ariadne's diverse research interests include citizen engagement, digital politics and governance, women and the future of work, policy advocacy, and young people and politics. Her new book, *Crowdsourced Politics: the rise of online petitions and micro donations*, will be published in September 2022; and she will have a co-authored book on storytelling and policy advocacy published in early 2023. She is a Fellow of the Academy of Social Sciences Australia; a visiting Senior Fellow at the Weizenbaum Institute for the Networked Society in Berlin, Germany; and from 2017-2020, was an active member of the Australian Research Council's College of Experts.

## WITH GRATITUDE

### THE ROYAL SOCIETY OF NEW SOUTH WALES EXPRESSES ITS GRATITUDE TO ALL MEMBERS OF THE 2022 ANNUAL FORUM PLANNING AND PROGRAM COMMITTEES

**Susan Pond AM FRSN FTSE FAHMS**  
Chair, Planning Committee

**Stephen Garton AM FRSN FAHA FASSA**  
Chair, Program Committee

**Lindsay Botten FRSN**  
Virtual Production, Planning Committee

**Robert Marks FRSN**  
Editor, Journal and Proceedings of the Royal Society of New South Wales, Planning Committee

**Tony Cunningham AO FRSN FAHMS**  
Program Committee, Australian Academy of Health and Medical Sciences

**Annabelle Duncan PSM FRSN FTSE**  
Program Committee, Australian Academy of Technology and Engineering

**Bridget Griffen-Foley FAHA**  
Program Committee, Australian Academy of the Humanities

**Philippa Pattison AO FRSN FASSA**  
Program Committee, Academy of the Social Sciences in Australia

**Hala Zreiqat AM FRSN FAA FTSE FAHMS**  
Program Committee, Australian Academy of Science

We note with gratitude the contribution of Emeritus Professor Robin King FRSN FTSE, who was Secretary of the Planning Committee until his tragic death on 25 July 2022. Vale Robin.

## BIOGRAPHIES

**Emeritus Professor Lindsay Botten FRSN**  
Emeritus Professor, Australian National University and the University of Technology Sydney, Council of the Royal Society of New South Wales



Lindsay Botten is an Emeritus Professor at the Australian National University (ANU) and the University of Technology Sydney (UTS), and presently serves on the Council of the Royal Society of NSW (RSNSW) and as its Webmaster. He was the foundation Director of National Computational Infrastructure (NCI) at ANU (2008–17) where he led the development of the Australia's highest performance and most highly integrated research supercomputing and data service, positioning NCI at the vanguard of international advanced computing. Previously, he was Professor of Applied Mathematics at UTS, where he established a reputation as an international authority in theoretical optics and photonics and led the computational modelling team of the ARC Centre of Excellence, CUDOS. In retirement, he is active as a consultant in high-performance computing nationally, and in RSNSW where he leads the development of its information technology, audio-visual, and social media modernisation. He is a Fellow of the Optical Society of America and the Royal Society of New South Wales.

**Robert Marks FRSN**  
Editor, Journal and Proceedings of the Royal Society of New South Wales



Emeritus Professor Robert Marks graduated in 1968 as an engineer. After completing a Master's degree at Melbourne University, he won a CSIRO Overseas Studentship, and studied at M.I.T. and Cambridge University before completing a Ph.D. in economics at Stanford. He was a foundation lecturer at the Australian Graduate School of Management and editor of the Australian Journal of Management. Recently he has been the Editor of the Journal & Proceedings of the Royal Society. He was a pioneer in using computer simulations in economics (he won the Second M.I.T. Competitive Pricing computer tournament in 1987), and his research has been in strategic market interactions and decision-making under uncertainty, as well as in energy and environmental policy.

**Anthony Cunningham AO FAHMS**  
Australian Academy of Health and Medical Sciences



Professor Anthony (Tony) Cunningham is a highly experienced viral immunologist, infectious diseases physician, clinician, and scientist, well known internationally for his research on the immunology of HIV and herpesviruses, his work on vaccine development and trialling, especially for

shingles and herpes, and as an antiviral agent expert. He is the Director of the Centre for Virus Research at The Westmead Institute for Medical Research (WIMR); Professor and vaccine theme leader in the Sydney Infectious Diseases Institute of the University of Sydney; and Director of the Australian Centre for HIV and Hepatitis Virology Research (ACH4). He is also Chair of the NSW and ACT Branch and Council Member, of the Australian Academy of Health and Medical Sciences. Tony has published more than 430 papers, with ~25,000 citations and is one of the top cited herpes vaccinologists internationally.

**Annabelle Duncan PSM FRSN FTSE**  
Academy of Technology and Engineering



Emeritus Professor Annabelle Duncan is the Chair of the NSW Physical Sciences Fund, The Sydney School of Entrepreneurship, the Australia Pacific International College, the Higher Education Leadership Institute, the College of Health Sciences, and the Steering Group for "Scoping the Antimicrobial Resistance R&D Agenda." She is a member of the NSW committee of ATSE. She is a Microbial Ecologist by training, who was educated at Otago University in New Zealand, La Trobe University and Monash University. She spent 16 years working for CSIRO, initially as a research scientist, later in science management and was the Chief of

CSIRO Molecular Science for 6 years. Annabelle has served as adviser to the Department of Foreign Affairs and Trade on biological weapons control and as a Biological Weapons Inspector with the United Nations in Iraq. From 2010 she worked at the University of New England, initially as DVCR and from 2014 – 2019 as Vice Chancellor.

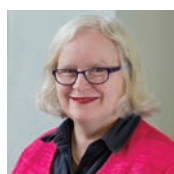
**Bridget Griffen-Foley FAHA**  
**Australian Academy of the Humanities**



Bridget Griffen-Foley is Professor of Media at Macquarie University, where she founded the Centre for Media History. She is the

author of several books on the history of the Australian media, including *Australian Radio Listeners and Television Viewers: Historical Perspectives* (Palgrave, 2020), and the editor of *A Companion to the Australian Media* (ASP, 2014). Bridget is the head of the Cultural and Communication Studies section of the Australian Academy of the Humanities, a member of the Editorial Board of the *Australian Dictionary of Biography*, and a selector for the Australian Media Hall of Fame.

**Philippa Pattison AO FRSN FASSA**  
**Academy of Social Sciences in Australia**



Pip Pattison completed a PhD in psychology at the University of Melbourne in 1980. Her work in the

quantitative social and psychological sciences has focussed on the development of mathematical and statistical models for social networks and network-based processes. These models illuminate the role of networks in understanding community-level outcomes and have been applied in a wide variety of contexts, including the transmission of infectious diseases and community recovery following bushfire. From 2014 to 2021 Pip served as Deputy Vice-Chancellor Education at the University of Sydney and prior to that was Deputy Vice-Chancellor Academic at the University of Melbourne.

**Hala Zreiqat AM FRSN FAA FTSE**  
**FAHMS**

**Australian Academy of Science**



Hala Zreiqat is Professor of biomedical engineering, University of Sydney. The focus of her research is on the

development of novel engineered synthetic materials and 3D printed platforms for regenerative medicine, particularly in the fields of musculoskeletal regeneration. Her research has led to several awarded patents, more than \$18M in competitive funding and national and international awards, including the 2018 New South Wales Premier's Woman of the Year, the King Abdullah II Order of Distinction, and the Eureka Prize winner for Innovative Use of Technology. Hala is a 2021-2022 Fulbright Senior Scholar; a Radcliffe Fellow at Harvard University.

The Royal Society of New South Wales and Learned Academies Forum

# RESHAPING AUSTRALIA COMMUNITIES IN ACTION

03 November 2022  
9.00am-6.00pm

Free of charge. Live-streamed.

#### HOW TO REGISTER

Via the Royal Society of New South Wales [website](#). Scan the QR code below or [click here](#).

Scan to register



[royalsoc.org.au](http://royalsoc.org.au)



#### RECORDING

All sessions from will be recorded and made available after the conference.

RSNSW channel



Australian Academy of Health and Medical Sciences



The Royal Society of New South Wales acknowledges the generous support by Her Excellency the Honourable Margaret Beazley AC KC, Governor of New South Wales, and the Office of the New South Wales Government Chief Scientist and Engineer.